

CRI-PC



# CRI-PC Test Stand

The CRI-PC Test Stand has been designed to provide service workshops with a cost effective and flexible all makes Common Rail injector test platform that is quick to set-up and easy to use.

Available as either a single or four line configuration, the All Makes Common Rail Injector Test Stand can be adapted to suit service workshop needs with **Hartridge™** application kits whether that be “contract batch testing” or “over the counter” testing where the mix and quantity of injectors is unpredictable.

## Main Features

- Controlled through Magma software and user interface.
- Manual and automatic operation.
- Create, edit and save test plans.
- View and print saved test plans.
- Incorporates semi-automatic injector clamping.
- Interlocked safety door and clear polycarbonate protective shield.
- Measures injector delivery.
- Measures injector coil resistance.
- Measures injector response time.
- Measures backleak flow and temperature (option).

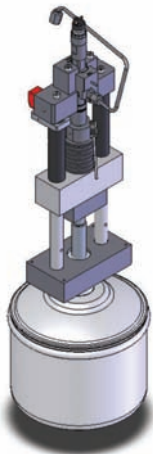


Figure 4 Pneumatic Clamping



Figure 2 CRI-PC Control Box

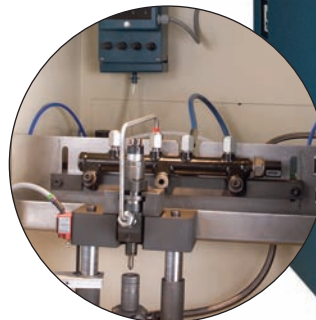


Figure 3 Inside of the CRI-PC



Figure 1 CRI-PC Test Stand

## Screen Display

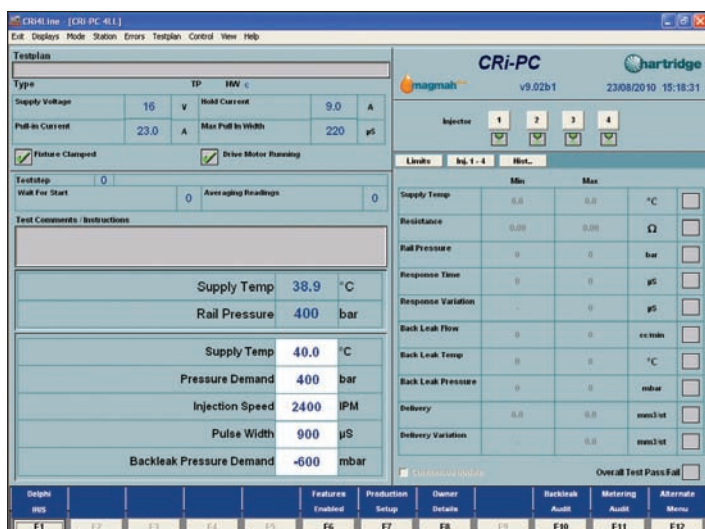


Figure 5 CRI-PC screen display.

# Benefits

- Tests Bosch, Delphi, Denso and Continental injectors.
- Tests up to 4 injectors at any one time.
- Modular kit structure – only purchase the applications you need.
- Pneumatic clamping.
- Fast diagnosis of faulty injectors.

# Technical Specification

- Rail pressure control: closed loop control using a high pressure pump.
- Injector control: generic current, voltage, and pulse width settings are supplied for existing Bosch, Delphi, Denso and Continental injectors.
- Injector delivery measurement.
- Injector coil resistance measurement.
- Injector response time measurement.
- Backleak flow and temperature measurement (option).

# Additional Accessories

- HK901 Backleak Measurement Unit.
- HK901-P Pressurised Backleak Measurement Unit.
- Injector cables\*.
- Nosepiece adaptors\*.
- Clamp blocks\*.
- HP pipes (rail to injector)\*.
- Backleak adapters\*.
- HK811 Printer

\*Please refer to the All Makes Common Rail Injector Test Application Coverage & Parts Matrix available from your local **Hartridge™** distributor.



**Figure 6** HK901 Backleak Measurement Unit

# Ordering

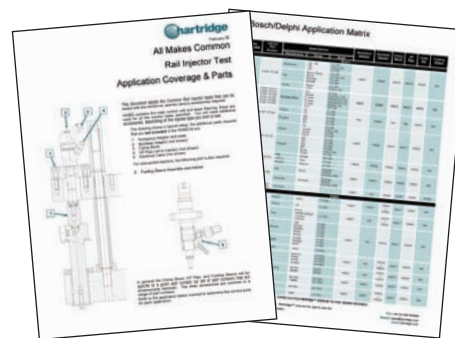
CRe-PC Typical order code: <b>CRe-01A-BP</b>					
VARIANTS:		OPTIONS:			
MODEL	VOLTAGE	Factory fitted			
CRe-01 Single Line Injector		Backleak Standard All Makes	-OR-	Delphi Authorised	Printer
	A: High Voltage 380 - 480 Volt - 3ph			Including HK901 - P	
		B	-OR-	C	P
CRe-04 Four Line Injector	B: Low Voltage 200 - 240 Volt - 3ph				
		HK901		Retrofit Kits HJ044 or HJ044A	HK811

## Application Kits\*

**HK9xx/C** Single line

**HK9xx** Four line

\*Please refer to the All Makes Common Rail Injector Test Application Coverage & Parts Matrix available from your local **Hartridge™** distributor.



# Complementary Products



**Figure 7** IFR-50 Flushing Rig



**Figure 8** HM1000DHT  
Microdiesel Clean Cabinet

### IFR-50 Flushing Rig

Flushes injectors to ensure best test results and help protect the metering unit of your test equipment.

**HM1000DHT** Microdiesel Clean Cabinet  
**HM1003 to 5** Ultrasonic Tanks  
**HM1009** Rinse Tank



As recommended by OEM's, provides a clean working area & cleaning equipment for workshops.

Contact your local **Hartridge™** distributor  
for more detailed information or visit  
**[www.hartridge.com](http://www.hartridge.com)**



The Hartridge Building  
Network 421  
Radcliffe Road  
Buckingham MK18 4FD  
United Kingdom

**Tel:** +44 (0)1280 825600

**Fax:** +44 (0)1280 825601

**Email:** [sales@hartridge.com](mailto:sales@hartridge.com)

**[www.hartridge.com](http://www.hartridge.com)**

Continuous development is taking place. **Hartridge™** reserves the right to alter the design and/or specification without prior notice.

© Hartridge™ 2010

CRI-PC (EN) 08/10 V1.10